

VIC Product Range



ISSUE DATE: / /

Multi Phase Meter Only Enclosures P 1

Stainless Steel Multi Phase Meter Only Enclosures P 2

Multi Phase Combination Meter Enclosures P 3-5

Stainless Steel Combination Meter Enclosures P 6

Multi Phase Combination Meter Enclosures P 7

Multi Tenancy 4 Meter Enclosures P 8

Multiple Tenancy Range P 9-10

Multi Tenancy 6 Meter Enclosures & Pre-Wired P 11

Multiple Tenancy 9 Meter Enclosures P 12

Brackets & Accessories P 13-14

Television Antenna Bracket P 15

Main & Conduit Covers P 16-17

Others P 18

Temporary Power Box P 19

Company name:

.....

Address:

.....

Phone, Email:

.....

Customer Name:

.....

KEY FEATURES

- ▶ Victorian Electricity Supply Industry (VESI) Accepted
- ▶ IP23 Protection Rating
- ▶ Victorian Power Approved Internal Lock & Key (CL001)
- ▶ Suitable for up to 2 x Single Phase meters (Single Occupancy)
- ▶ Compliant with Victorian Service and Installation Rules (VESI Acceptance Number SIR140216B)
- ▶ 75mm Behind Meter Panel (Also available MEV1-150 with 150mm Behind Meter Panel)
- ▶ Galvanised steel construction Powder Coated Light Grey (RAL7035)
- ▶ Designed to AS/NZS 3000:2018 requirements
- ▶ Metering Neutral Link 1 x 16mm² / 1 x 25mm² / 1 70mm²
- ▶ Hand Operated Service Fuse Holder (22mm Fuse Link Diameter) Suitable for up to 100A / 35mm² Supply
- ▶ Door open catch / Door cable protector / Equipped with CL001 fuse lock protection
- ▶ Door open strap for easy installation & maintenance



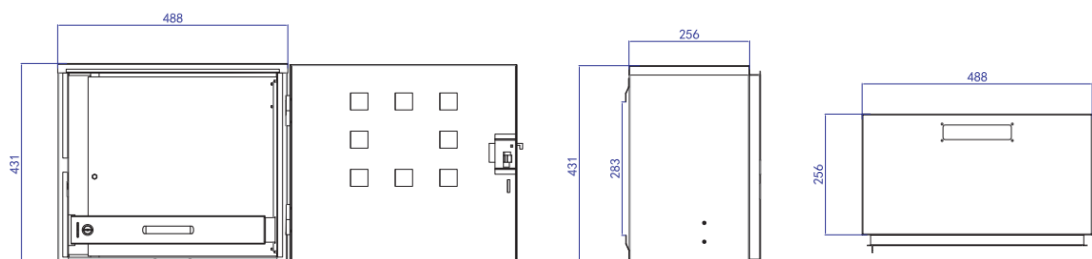
Technical Specifications

Specifications	Width	Height	Depth
Size - MEV121	470	420	270
Meter Panel	470	420	345
Neutral Grid	400	380	6

Product	Order Code	Meter Isolator	Quantity
Meter Only (75mm)	MEV1	▶ Meter Only Enclosure 75mm Behind Panel	1
Meter Only (75mm)	MEV1	▶ Meter Only Enclosure 75mm Behind Panel	20
Meter Only (75mm)	MEV1	▶ Meter Only Enclosure 75mm Behind Panel	60
Meter Only (150mm)	MEV1-15	▶ Meter Only Enclosure 150mm Behind Panel	1

Available Accessories

Accessories/Spare Parts	Order Code	Description	Quantity
Spare Part - Door	DRV1	▶ MEV1 Replacement Hinged Door	1
Spare Part - MEV1 Standard Panel	MPV1-D	▶ MEV1 Hinged Meter Panel Drilled for Victorian Standard	1
Spare Part - MEV1 Blank Panel	MPV1-B	▶ MEV1 Hinged Meter Pannel Blank for Custom Projects	1

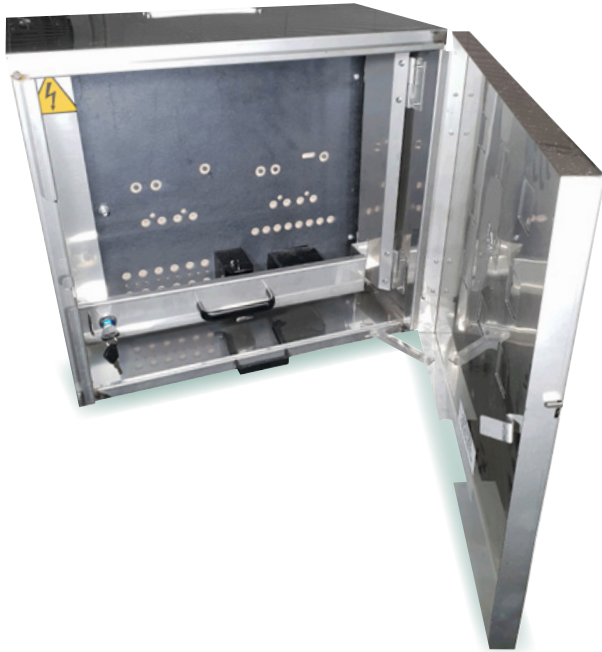


MEV1-SS

Stainless Steel Multi Phase Meter Only Enclosures

IP23

Enclosure Range



KEY FEATURES

- ▶ Victorian Electricity Supply Industry (VESI) Accepted
- ▶ IP23 Protection Rating
- ▶ Victorian Power Approved Internal Lock & Key (CL001)
- ▶ 100A Service Fuse Holder & Heavy Duty Neutral Link Fitted
- ▶ 316 Stainless Steel Natural Finish
- ▶ Provision on meter panel for two meters.
- ▶ Approved lock and key to protect service fuse.
- ▶ Top Cable entry gland with 140mm x 25mm access.
- ▶ Fitted with quality 100A Fuse Holder & Neutral Link.
- ▶ Louvered door to provide ventilation.
- ▶ Quality galvanised steel construction
- ▶ Powder coated for additional corrosion protection (RAL7035)
- ▶ Removable door with retainer bar to keep door open.
- ▶ Spare parts kit supplied.
- ▶ Rain Hood available extra

Technical Specifications

Specifications	Width	Height	Depth
Size	470	420	270
Meter Panel	400	380	6

Product	Order Code	Meter Isolator	Quantity
Meter Only (75mm)	MEV1 SS	▶ Meter Only Enclosure 75mm Behind Panel (Stainless Steel)	1

Available Accessories

Accessory/ Spare Parts	Order Code	Description	Quantity
Spare Part - MEV1 Standard Panel	MPV1-D	▶ MEV1 Hinged Meter Panel Drilled for Victorian standard	1
Spare Part - MEV1 Blank Panel	MPV1-B	▶ MEV1 Hinged Meter Panel Blank for Custom Projects	1



IP23
Enclosure Range

KEY FEATURES

- ▶ Victorian Electricity Supply Industry (VESI) Accepted
- ▶ IP23 Protection Rating
- ▶ Victorian Power Approved Internal Lock & Key (CL001)
- ▶ 100A Service Fuse Holder & Heavy Duty Neutral Link Fitted
- ▶ Galvanized Steel Construction with Powdercoat Finish (RAL7035)

Technical Specifications

Specifications	Width	Height	Depth
Size	485	430	280
Meter Panel	220	390	6
Neutral Grid	11 x ø5mm (Suits up to 10mm) 9 x ø8mm (Suits up to 25mm)		
Earth Grid	10 x ø5mm (Suits up to 10mm) 1 x ø8mm (Suits up to 25mm)		

Product	Order Code	Meter Isolator	Quantity
Combintion - 1 Phase	MEV120	▶ 20 DIN Switchboard with CL001 Service Fuse Lock-off	1
Combintion - 1 Phase	MEV120	▶ 20 DIN Switchboard with CL001 Service Fuse Lock-off	4



KEY FEATURES

IP23

Enclosure Range

- ▶ Victorian Electricity Supply Industry (VESI) Accepted
- ▶ IP23 Protection Rating
- ▶ Victorian Power Approved Internal Lock & Key (CL001)
- ▶ Suitable for up to 2 x Single Phase meters (Single Occupancy)
- ▶ Compliant with Victorian Service and Installation Rules (VESI Acceptance Number SIR140216B)
- ▶ 75mm Behind Meter Panel (Also available MEV1-150 with 150mm Behind Meter Panel)
- ▶ Galvanised steel construction Powder Coated Light Grey (RAL7035)
- ▶ Designed to AS/NZS 3000:2018 requirements
- ▶ 21 Module full DIN
- ▶ Metering Neutral Link 1 x 16mm² / 1 x 25mm² / 1 70mm²
- ▶ Hand Operated Service Fuse Holder (22mm Fuse Link Diameter) Suitable for up to 100A / 35mm² Supply
- ▶ Door open catch / Door cable protector / Equipped with CL001 fuse lock protection
- ▶ Door open strap for easy installation & maintenance
- ▶ Door Document Holder

Technical Specifications

Specifications	Width	Height	Depth
Size - MEV121	470	670	270
Meter Panel	400	380	6
Neutral Grid	11 x Ø5mm (Suits up to 10mm) 9 x Ø8mm (Suits up to 25mm)		
Earth Grid	10 x Ø5mm (Suits up to 10mm) 1 x Ø8mm (Suits up to 25mm)		

Product	Order Code	Meter Isolator	Quantity
Combination (75mm)	MEV121	▶ Meter + 21 DIN Enclosure 75mm Behind Panel	8
Combination (75mm)	MEV121	▶ Meter + 21 DIN Enclosure 75mm Behind Panel	20
Combination (75mm)	MEV121	▶ Meter + 21 DIN Enclosure 75mm Behind Panel	60

Available Accessories

Accessories/Spare Parts	Order Code	Description	Quantity
Spare Part - MEV121 Escutcheon	EV121	▶ MEV121 Replacement Escutcheon Plate	1
Spare Part - MEV121 Door	DRV121	▶ MEV121 Replacement Hinged Door	1
Spare Part - MEV1 STD. Panel	MPV1-D	▶ MEV1 Hinged Meter Panel Drilled for Victorian Standard	1
Spare Part - MEV1 Blank Panel	MPV1-B	▶ MEV1 Hinged Meter Panel Blank for Custom Projects	1
VIC 1 Rain Hood	RHV1	▶ Victorian Single Tennancy Rain Hood	1
VIC 1 Plinth 650	PLV1-65	▶ 3mm Steel 650mm(H) x 475mm(W) x 250mm(D)	1
VIC 1 Plinth 1000	PLV-100	▶ 3mm Steel 1000mm(H) x 475mm(W) x 250mm(D)	1



KEY FEATURES

IP23

Enclosure Range

- ▶ Victorian Electricity Supply Industry (VESI) Accepted
- ▶ IP23 Protection Rating
- ▶ Victorian Power Approved Internal Lock & Key (CL001)
- ▶ Suitable for up to 2 x Single Phase meters (Single Occupancy)
- ▶ Compliant with Victorian Service and Installation Rules (VESI Acceptance Number SIR140216B)
- ▶ 150mm Behind Meter Panel
- ▶ Galvanised steel construction Powder Coated Light Grey (RAL7035)
- ▶ Designed to AS/NZS 3000:2018 requirements
- ▶ 21 Module full DIN
- ▶ Metering Neutral Link 1 x 16mm² / 1 x 25mm² / 1 70mm²
- ▶ Hand Operated Service Fuse Holder (22mm Fuse Link Diameter) Suitable for up to 100A / 35mm² Supply
- ▶ Door open catch / Door cable protector / Equipped with CL001 fuse lock protection
- ▶ Door open strap for easy installation & maintenance

Technical Specifications

Specifications	Width	Height	Depth
Size - MEV121-15	470	670	345
Meter Panel	400	380	6
Neutral Grid	11 x Ø5mm (Suits up to 10mm) 9 x Ø8mm (Suits up to 25mm)		
Earth Grid	10 x Ø5mm (Suits up to 10mm) 1 x Ø8mm (Suits up to 25mm)		

Product	Order Code	Meter Isolator	Quantity
Combination (150mm)	MEV121-15	▶ Meter + 21 DIN Enclosure 150mm Behind Panel	1
Combination (150mm)	MEV121-15	▶ Meter + 21 DIN Enclosure 150mm Behind Panel	4

Available Accessories

Accessories/Spare Parts	Order Code	Description	Quantity
Spare Part - MEV121 Escutcheon	EV121	▶ MEV121 Replacement Escutcheon Plate	1
Spare Part - MEV121 Door	DRV121	▶ MEV121 Replacement Hinged Door	1
Spare Part - MEV1 STD. Panel	MPV1-D	▶ MEV1 Hinged Meter Pannel Drilled for Victorian Standard	1
Spare Part - MEV1 Blank Panel	MPV1-B	▶ MEV1 Hinged Meter Pannel Blank for Custom Projects	1
VIC 1 Rain Hood	RHV1	▶ Victorian Single Tennancy Rain Hood	1
VIC 1 Plinth 650	PLV1-65	▶ 3mm Steel 650mm(H) x 475mm(W) x 250mm(D)	1
VIC 1 Plinth 1000	PLV-100	▶ 3mm Steel 1000mm(H) x 475mm(W) x 250mm(D)	1

MEV121- SS

Stainless Steel Combination Meter Enclosures



IP23

Enclosure Range

KEY FEATURES

- ▶ Victorian Electricity Supply Industry (VESI) Acceptance No. SIR 990501B
- ▶ Victorian Power Approved Internal Lock & Key (CL001)
- ▶ IP23 Protection Rating
- ▶ Assembled with Neutral & Earth Bar Grid
- ▶ 316 Stainless Steel Natural Finish
- ▶ 21 Module Capacity Switchboard.
- ▶ Removable door with retainer bar to keep door open.
- ▶ Supplied with full length din rail.
- ▶ Cable access from top & bottom
- ▶ Pole fillers & Busbar etc Included In Parts Bag.
- ▶ Supplied With Heavy Duty Neutral Link.
- ▶ Louvered door to provide ventilation.
- ▶ Fitted with quality 100A Fuse Holder & Neutral Link.
- ▶ Provision on meter panel for two meters.
- ▶ Approved lock and key to protect service fuse.
- ▶ Rain Hood available extra
- ▶ Spare parts kit supplied.

Technical Specifications

Specifications	Width	Height	Depth
Enclosure Size	470	670	270
Meter Panel	400	380	6
Neutral Grid	11 x ø5mm (Suit up to 10mm) 9 x ø8mm (Suits up to 25mm)		
Earth Grid	10 x ø5mm (Suit up to 10mm) 1 x ø8mm (Suits up to 25mm)		

Product	Order Code	Meter Isolator	Quantity
Combination Stainless	MEV121 SS	▶ Meter + 21 DIN Enclosure 75mm Behind Panel (Stainless Steel)	1

Available Accessories

Accessory	Order Code	Description	Quantity
VIC 1 Rain Hood - Stainless Steel	RHV1 SS	▶ Victorian Single Tennancy 316 Stainless Steel Rain Hood	1
VIC 1 Plinth - Stainless Steel	PLV1 - 100 SS	▶ 3mm Stainless Steel 1000(H) 475mm (W) x 250mm(D)	1
Spare Part - Standard Panel	MPV1 - D	▶ Hinged Meter Pannel Drilled for Victorian Standard	1
Spare Part - Blank Panel	MPV1 - B	▶ Hinged Meter Pannel Blank for Custom Projects	1



KEY FEATURES

IP23

Enclosure Range

- ▶ Victorian Electricity Supply Industry (VESI) Accepted
- ▶ IP23 Protection Rating
- ▶ Victorian Power Approved Internal Lock & Key (CL001)
- ▶ Suitable for up to 2 x Single Phase meters (Single Occupancy) or 1 single and 1 multiple phase
- ▶ Compliant with Victorian Service and Installation Rules (VESI Acceptance Number SIR140216B)
- ▶ 75mm Behind Meter Panel
- ▶ Galvanised steel construction Powder Coated Light Grey (RAL7035)
- ▶ Designed to AS/NZS 3000:2018 requirements
- ▶ 2x 21 Module full DIN
- ▶ Metering Neutral Link 1 x 16mm² / 1 x 25mm² / 1 70mm²
- ▶ Hand Operated Service Fuse Holder (22mm Fuse Link Diameter) Suitable for up to 100A / 35mm² Supply 3 Phase Version Available
- ▶ Door open catch / Door cable protector / Equipped with CL001 fuse lock protection
- ▶ Door open strap for easy installation & maintenance
- ▶ Door Document Holder

Technical Specifications

Specifications	Width	Height	Depth
Size - MEV121	470	845	270
Meter Panel	400	380	6
Neutral Grid	11 x Ø5mm (Suits up to 10mm) 9 x Ø8mm (Suits up to 25mm)		
Earth Grid	10 x Ø5mm (Suits up to 10mm) 1 x Ø8mm (Suits up to 25mm)		

Product	Order Code	Meter Isolator	Quantity
Combination (75mm)	MEV142	▶ Meter + 42 DIN Enclosure 75mm Behind Panel Single Phase	1
Combination (75mm)	MEV142-3P	▶ Meter + 42 DIN Enclosure 75mm Behind Panel 3 Phase	11

Available Accessories

Accessories/Spare Parts	Order Code	Description	Quantity
Spare Part - MEV121 Escutcheon	EV121	▶ MEV121 Replacement Escutcheon Plate	1
Spare Part - MEV121 Door	DRV121	▶ MEV121 Replacement Hinged Door	1
Spare Part - MEV1 STD. Panel	MPV1-D	▶ MEV1 Hinged Meter Pannel Drilled for Victorian Standard	1
Spare Part - MEV1 Blank Panel	MPV1-B	▶ MEV1 Hinged Meter Pannel Blank for Custom Projects	1
VIC 1 Rain Hood	RHV1	▶ Victorian Single Tennancy Rain Hood	1
VIC 1 Plinth 650	PLV1-65	▶ 3mm Steel 650mm(H) x 475mm(W) x 250mm(D)	1
VIC 1 Plinth 1000	PLV-100	▶ 3mm Steel 1000mm(H) x 475mm(W) x 250mm(D)	1



IP23

Enclosure Range

KEY FEATURES

- ▶ Victorian Electricity Supply Industry (VESI) Accepted
- ▶ IP23 Protection Rating
- ▶ SPD Fuse Holder on Separate Panel
- ▶ Earth & Neutral Bar Grid Fitted & Earthed to Enclosure
- ▶ Full 10 Module DIN Capacity Switchboard
- ▶ Heavy Duty Hinged Door (Removable)
- ▶ Generous Cable Access Top / Bottom
- ▶ Galvanised Steel Construction
- ▶ Powder Coating Finish Light Grey (RAL7035)
- ▶ Parts Bag Included
- ▶ Provision For Up To Four Single Phase Meters
- ▶ Available Pre-Wired with 16mm Australian Made Flex Cable
- ▶ Fuse Holders & Sub Mains MCB's Installed with Pre Wired

Technical Specifications

Specifications	Width	Height	Depth
Size	490	935	355
Service Panel	200	260	6
Meter Grid	400	600	6
Neutral Grid	2 x ø5mm (Suits up to 10mm) 10 x ø8mm (Suits up to 25mm)		
Earth Grid	1 x ø5mm (Suits up to 10mm) 10 x ø8mm (Suits up to 25mm)		

Product	Order Code	Meter Isolator	Quantity
Standard	MEV4	4 Meter Multiple Tenancy 150mm Behind Panel 8 Pole	1
Standard	MEV4	4 Meter Multiple Tenancy 150mm Behind Panel 8 Pole	4
Plinth/Hood Mounted	MEV4-P65H	Plinth & Hood Mounted 4 Meter Multiple Tenancy 150mm Behind Panel 8 Pole	1
Plinth/Hood Mounted	MEV4-P65H	Plinth & Hood Mounted 4 Meter Multiple Tenancy 150mm Behind Panel 8 Pole	4

Available Accessories

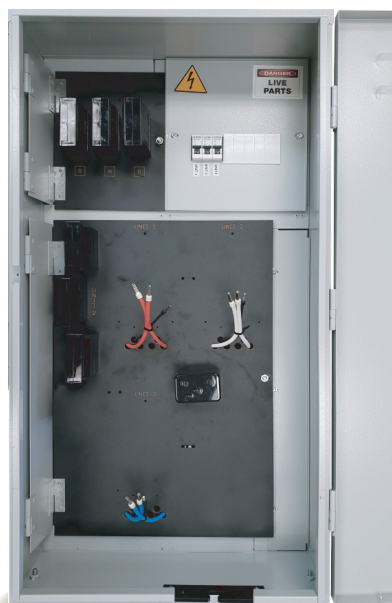
Accessories/Spare Parts	Order Code	Description	Quantity
Vic 4 Rain Hood	RHV4	▶ Victoria 4 RainHood / Canopy	1
Vic 4 Plinth	PLV4-65	▶ 3mm Steel 650(H) x 490(W) x 300(D)	1

PW1-MEV4-3 & PW1-MEV4-4

Multiple Tenancy Range

IP23

Enclosure Range



KEY FEATURES

- ▶ Victorian Electricity Supply Industry (VESI) Accepted
- ▶ IP23 Protection Rating
- ▶ Compliant with Victorian Service and Installation Rules (VESI Acceptance Number SIR140216B)
- ▶ 150mm Behind Meter Panel
- ▶ Galvanised steel construction Powder Coated Light Grey (RAL7035)
- ▶ Designed to AS/NZS 3000:2018 requirements
- ▶ 8 Module full DIN
- ▶ Consumer Main Switches - Available for 3 x Clipsal 4CB150/6MCB' or 4x Clipsal 4CB150/6MCB's
- ▶ Hand Operated Service Fuse Holder (22mm Fuse Link Diameter)
- ▶ Suitable for up to 100A / 35mm² Supply - Only for PW1-MEV4-4
- ▶ Door cable protector
- ▶ Door open strap for easy installation & maintenance
- ▶ Plinth, Rainhood available as extras (PW1-MEV4-3) and flush mount available (PW1-MEV4-4)

Technical Specifications

Code	Occupancy	Width	Height	Depth	Panel Size
PW1 - MEV4 - 3	3 Meter	495 mm	940 mm	355 mm	400 x 600 mm
PW1 - MEV4 - 4	4 Meter	495 mm	940 mm	355 mm	400 x 600 mm

Pre - Wired					
16 mm Flex Pre - wired Options	Order Code	Service Fuses	Meter Fuse Holders	Sub Mains MCB	Quantity
Single Phase 3 Meter	PW1 - MEV4 - 3	3 X 100A	3 X 100A	3 X 1P 50A	1
Single Phase 4 Meter	PW1 - MEV4 - 4	3 X 100A	4 X 100A	4 X 1P 50A	1
Three Phase 4 Meter - Vic 6 Spec	PW3 - MEV6 - 4	3 X 100A	12 X 100A	4 X 3P 50A	1

Available Accessories

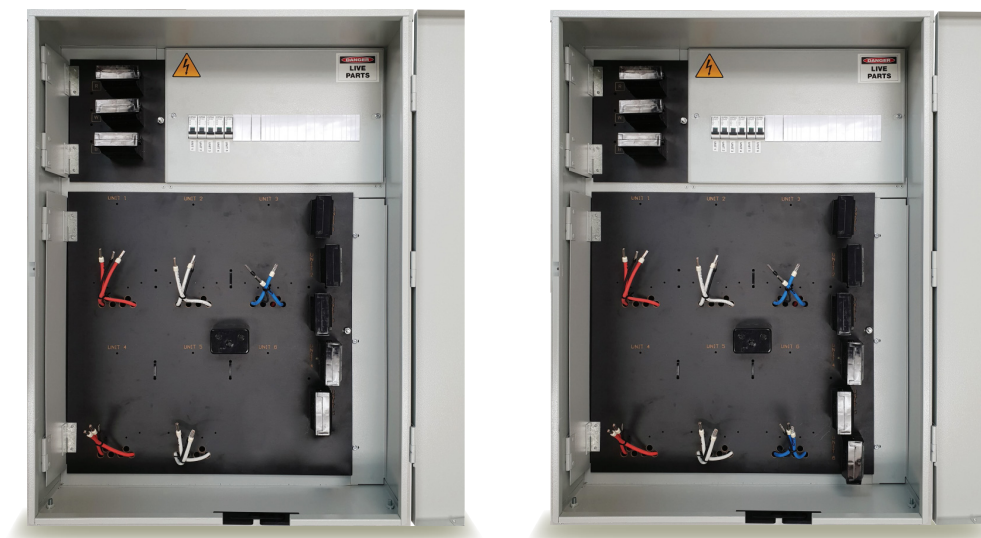
Accessory/Spare Parts	Order Code	Description	Quantity
Vic 4 Rain Hood	RHV4	▶ Victoria 4 Rain Hood / Canopy	1
Vic 4 Plinth	PLV 4 - 65	▶ 3mm Steel 650 (H) x 490 (W) x 300(D)	1

PW1-MEV6-5 & PW1-MEV6-6

Multiple Tenancy Range

IP23

Enclosure Range



KEY FEATURES

- ▶ Victorian Electricity Supply Industry (VESI) Accepted
- ▶ IP23 Protection Rating
- ▶ Compliant with Victorian Service and Installation Rules (VESI)
- ▶ Acceptance Number SIR140216B)
- ▶ 150mm Behind Meter Panel
- ▶ Galvanised steel construction Powder Coated Light Grey (RAL7035)
- ▶ Designed to AS/NZS 3000:2018 requirements
- ▶ 20 or 18 Module full DIN
- ▶ Consumer Main Switches - 6 x 50 AMP MCB
- ▶ Service Neutral Link 1 x 16mm² / 1 x 25mm² / 1 x 70mm²
- ▶ Hand Operated Service Fuse Holder (22mm Fuse Link Diameter)
- ▶ Suitable for up to 100A / 35mm² Supply
- ▶ Door cable protector
- ▶ Door open strap for easy installation & maintenance
- ▶ Plinth, Rainhood available as extras (PW1-MEV6-5) and flush mount available (PW1-MEV6-6)

Technical Specifications

Code	Occupancy	Width	Height	Depth	Panel Size
PW1 - MEV6-5	5 Meter	695 mm	940 mm	355 mm	600 x 600 mm
PW1 - MEV6-6	6 Meter	695 mm	940 mm	355 mm	600 x 600 mm

Pre - Wired					
16 mm Flex Pre - wired Options	Order Code	Service Fuses	Meter Fuse Holders	Sub Mains MCB	Quantity
Single Phase 5 Meter	PW1 - MEV6-5	3 X 100A	5 X 100A	5 X 1P 50A	1
Single Phase 6 Meter	PW1 - MEV6 - 6	3 X 100A	6 X 100A	6 X 1P 50A	1

Available Accessories

Accessory/Spare Parts	Order Code	Description	Quantity
Vic 6 Rain Hood	RHV6	▶ Victoria 6 Meter Rain Hood / Canopy	1
Vic 6 Plinth	PLV 6 - 65	▶ Victorian 6 Meter Plinth 3mm Steel 650 (H) x 690 (W) x 300(D)	1



KEY FEATURES

- ▶ Victorian Electricity Supply Industry (VESI) Accepted
- ▶ IP23 Protection Rating
- ▶ SPD Fuse Holder on Separate Panel
- ▶ Earth & Neutral Bar Grid Fitted & Earthed to Enclosure
- ▶ Full 18 Module DIN Capacity Switchboard
- ▶ Heavy Duty Hinged Door (Removable)
- ▶ Generous Cable Access Top / Bottom
- ▶ Galvanised Steel Construction
- ▶ Powder Coating Finish Light Grey (RAL7035)
- ▶ Parts Bag Included
- ▶ Provision For Up To Six Single Phase Meters
- ▶ Available Pre-Wired with 16mm Australian Made Flex Cable
- ▶ Fuse Holders & Sub Mains MCB's Installed with Pre Wired

IP23

Enclosure Range

Technical Specifications

Specifications	Width	Height	Depth
Size	690	935	355
Service Panel	200	260	6
Meter Grid	600	600	6
Neutral Grid	2 x ø5mm (Suits up to 10mm) 10 x ø8mm (Suits up to 25mm)		
Earth Grid	1 x ø5mm (Suits up to 10mm) 10 x ø8mm (Suits up to 25mm)		

Product	Order Code	Meter Isolator	Quantity
Standard	MEV6	6 Meter Multiple Tenancy 150mm Behind Panel 20 Pole	1
Standard	MEV6	6 Meter Multiple Tenancy 150mm Behind Panel 20 Pole	4
Plinth/Hood Mounted	MEV6-P65H	Plinth & Hood Mounted 6 Meter Multiple Tenancy 150mm Behind Panel 20 Pole	1
Plinth/Hood Mounted	MEV6-P65H	Plinth & Hood Mounted 6 Meter Multiple Tenancy 150mm Behind Panel 20 Pole	4

Available Accessories

Accessories/Spare Parts	Order Code	Description	Quantity
Vic 6 Rain Hood	RHV6	▶ Victoria 6 Meter RainHood / Canopy	1
Vic 6 Plinth	PLV6-65	▶ Victorian 6 Meter Plinth 3mm Steel 650(H) 690(W) 300(D)	1
Spare Part - Vic 6 Door & Latch	DRV6L	▶ STD VIC Type 6 replacement Hinged Door	1
Spare Part - Vic 6 / 6 Meter Panel	MPV6-6D	▶ Hinged Meter Panel Drilled for 4 Units	1
Spare Part - Vic 6 Blank Panel	MPV6-B	▶ Hinged Panel Blank for Custom Projects	1
Spare Part - Service Fuse Panel	MPV-SF	▶ Hinged Service Fuse Panel 200mmx260mmx6mm	1



IP23

Enclosure Range

KEY FEATURES

- ▶ Victorian Electricity Supply Industry (VESI) Accepted
- ▶ IP23 Protection Rating
- ▶ SPD Fuse Holder on Separate Panel
- ▶ Earth & Neutral Bar Grid Fitted & Earthed to Enclosure
- ▶ Full 18 Module DIN Capacity Switchboard
- ▶ Heavy Duty Hinged Door (Removable)
- ▶ Generous Cable Access Top / Bottom
- ▶ Galvanised Steel Construction
- ▶ Powder Coating Finish Light Grey (RAL7035)
- ▶ Parts Bag Included
- ▶ Provision For Up To Six Single Phase Meters
- ▶ Available Pre-Wired with 16mm Australian Made Flex Cable
- ▶ Fuse Holders & Sub Mains MCB's Installed with Pre Wired
- ▶ Provision For Up To Nine Meters Plinth & Rain Hood Available

Technical Specifications

Specifications	Width	Height	Depth	Quantity
Size	690	1235	355	1
Service Panel	200	260	6	1
Meter Grid	600	900	6	1
Neutral Grid	2 x ø5mm (Suits up to 10mm) 10 x ø8mm (Suits up to 25mm)			
Earth Grid	1 x ø5mm (Suits up to 10mm) 10 x ø8mm (Suits up to 25mm)			

Available Accessories

Accessories/Spare Parts	Order Code	Description	Quantity
Vic 9 Rain Hood	RHV6	▶ Victoria 6 Meter RainHood / Canopy	1
Vic 9 Plinth	PLV6-65	▶ Victorian 6 Meter Plinth 3mm Steel 650(H) 690(W) 300(D)	1
Spare Part - Vic 9 Door & Latch	DRV9L	▶ STD VIC Type 6 replacement Hinged Door	1
Spare Part - Vic 9 Blank Panel	MPV9-B	▶ Hinged Panel Blank for Custom Projects	1
Spare Part - Service Fuse Panel	MPV-SF	▶ Hinged Service Fuse Panel 200mm x 260mm x 6mm	1

 <p>1P OUTDOOR DIRECT IN GROUND BRACKET GAL</p>	<table><tr><th>Description</th><th>Quantity</th></tr><tr><td>950x40sq tube Mounting point 1PH outlet - Direct In Ground</td><td>5</td></tr></table>	Description	Quantity	950x40sq tube Mounting point 1PH outlet - Direct In Ground	5
Description	Quantity				
950x40sq tube Mounting point 1PH outlet - Direct In Ground	5				
 <p>1P OUTDOOR BOLT DOWN BRACKET GAL</p>	<table><tr><th>Description</th><th>Quantity</th></tr><tr><td>450x40sq tube Mounting point 1PH outlet - Bolt Down</td><td>5</td></tr></table>	Description	Quantity	450x40sq tube Mounting point 1PH outlet - Bolt Down	5
Description	Quantity				
450x40sq tube Mounting point 1PH outlet - Bolt Down	5				
 <p>3P OUTDOOR DIRECT IN GROUND BRACKET GAL</p>	<table><tr><th>Description</th><th>Quantity</th></tr><tr><td>1080x40sq tube Mounting point 3PH outlet - Direct In Ground</td><td>5</td></tr></table>	Description	Quantity	1080x40sq tube Mounting point 3PH outlet - Direct In Ground	5
Description	Quantity				
1080x40sq tube Mounting point 3PH outlet - Direct In Ground	5				
 <p>3P OUTDOOR BOLT DOWN BRACKET GAL</p>	<table><tr><th>Description</th><th>Quantity</th></tr><tr><td>580x40sq tube Mounting point 3PH outlet - Bolt Down</td><td>5</td></tr></table>	Description	Quantity	580x40sq tube Mounting point 3PH outlet - Bolt Down	5
Description	Quantity				
580x40sq tube Mounting point 3PH outlet - Bolt Down	5				



**HORIZONTAL MOUNT
ATTACHMENT**

- Point of Attachment
Vertical 1kN Rating
Hot Dipped Galvanised
Fixing Plate:
200mm(L)x40mm(W);
Size Holes: Ø 9.5

10



**VERTICAL MOUNTS
ATTACHMENT**

- Point of Attachment
Vertical 1kN Rating
Hot Dipped Galvanised
Fixing Plate:
100mm(L)x40mm(W);
Size Holes: Ø 9.5

10



**RING MOUNT
ATTACHMENT**

- Point of Attachment
Ring 1kN Rating
Hot Dipped Galvanised
Fixing Plate:
100mm(L)x40mm(W);
Size Holes: Ø 9.5

10

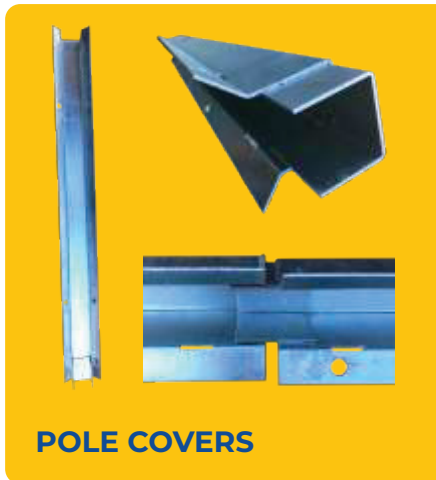
 <p>GFAM GUTTER FIX ANTENNA MOUNT</p>	<table> <tr> <th>Description</th><th>Quantity</th></tr> <tr> <td>GFAM Gutter Fix Antenna Mount with 1.8m Mast</td><td>1</td></tr> </table>	Description	Quantity	GFAM Gutter Fix Antenna Mount with 1.8m Mast	1
Description	Quantity				
GFAM Gutter Fix Antenna Mount with 1.8m Mast	1				
 <p>TRIPOD METAL ROOF ANTENNA MOUNT</p>	<table> <tr> <th>Description</th><th>Quantity</th></tr> <tr> <td>Tripod Metal Roof Antenna Mount with 1.2m Mast</td><td>1</td></tr> </table>	Description	Quantity	Tripod Metal Roof Antenna Mount with 1.2m Mast	1
Description	Quantity				
Tripod Metal Roof Antenna Mount with 1.2m Mast	1				
 <p>TRIPOD TILE ROOF ANTENNA MOUNT</p>	<table> <tr> <th>Description</th><th>Quantity</th></tr> <tr> <td>Tripod Tile Roof Antenna Mount with 1.2m Mast</td><td>1</td></tr> </table>	Description	Quantity	Tripod Tile Roof Antenna Mount with 1.2m Mast	1
Description	Quantity				
Tripod Tile Roof Antenna Mount with 1.2m Mast	1				
 <p>CFAM CURVED FASCIA ANTENNA MOUNT</p>	<table> <tr> <th>Description</th><th>Quantity</th></tr> <tr> <td>CFAM Curved Fascia Antenna Mount with 1.2m Mast</td><td>1</td></tr> </table>	Description	Quantity	CFAM Curved Fascia Antenna Mount with 1.2m Mast	1
Description	Quantity				
CFAM Curved Fascia Antenna Mount with 1.2m Mast	1				
 <p>RFAM RAFTER FIX ANTENNA MOUNT</p>	<table> <tr> <th>Description</th><th>Quantity</th></tr> <tr> <td>RFAM Rafter Fix Antenna Mount with 1.8m Mast</td><td>1</td></tr> </table>	Description	Quantity	RFAM Rafter Fix Antenna Mount with 1.8m Mast	1
Description	Quantity				
RFAM Rafter Fix Antenna Mount with 1.8m Mast	1				



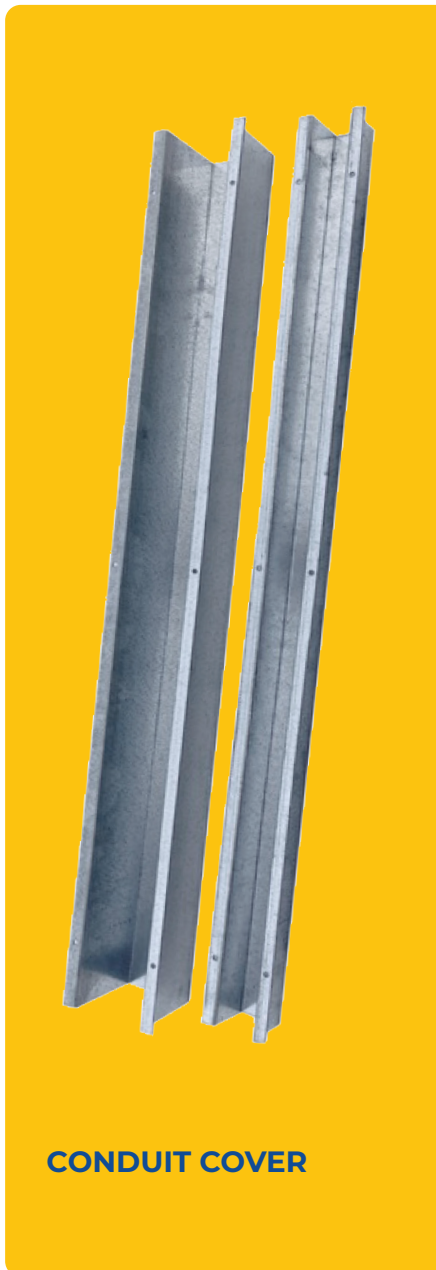
Products	Description	Quantity
Mains Cover 32 x 225 MSC 32-225	36 x 225 x 3mm (Suits 32 mm)	1
Mains Cover 32 x 450 MSC 32-450	36 x 450 x 3mm (Suits 32 mm)	1
Mains Cover 54 x 450 MSC 50-450	54 x 450 x 3mm (Suits 50 mm)	1
Mains Cover 50 x 1200 MSC 50-1200	54 x 1200 x 3mm (Suits 50 mm)	1
Mains Cover 100 x 450 MSC 100-450	104 x 450 x 3mm (Suits 2 x 50 mm)	1



Products	Description	Quantity
Conduit Cover 25 CCV 25	1200mm(L) x 29mm(W) x 29mm(H) x 2mm(T) Hot Dipped Galvanised Steel (Suits 25mm)	1
Conduit Cover 32 CCV 32	1200mm(L) x 36mm(W) x 36mm(H) x 2mm(T) Hot Dipped Galvanised Steel (Suits 32mm)	1
Conduit Cover 38 CCV 38	1200mm(L) x 42mm(W) x 42mm(H) x 2mm(T) Hot Dipped Galvanised Steel (Suits 38mm)	1
Conduit Cover 50 CCV 50	1200mm(L) x 54mm(W) x 54mm(H) x 2mm(T) Hot Dipped Galvanised Steel (Suits 50mm)	1
Conduit Cover 75 CCV 75	1200mm(L) x 79mm(W) x 79mm(H) x 2mm(T) Hot Dipped Galvanised Steel (Suits 75mm)	1
Conduit Cover 100 CCV 100	1200mm(L) x 104mm(W) x 104mm(H) x 2mm(T) Hot Dipped Galvanised Steel (Suits 100mm)	1
Conduit Cover 125 CCV 125	1200mm(L) x 129mm(W) x 129mm(H) x 2mm(T) Hot Dipped Galvanised Steel (Suits 125mm)	1
Conduit Cover 150 CCV 150	1200mm(L) x 154mm(W) x 154mm(H) x 2mm(T) Hot Dipped Galvanised Steel (Suits 150mm)	1



Parts	Description	Quantity
Protection Pole Cover 50mm PVC 50	Covers 2 x 50 x 900mm to suite 50mm conduit	1
Protection Pole Cover 75mm PVC 75	Covers 2 x 75 x 900mm to suite 75mm conduit	1
Protection Pole Cover 100mm PVC 100	Covers 2 x 100 x 900mm to suite 100mm conduit	1



Parts	Description	Quantity
Conduit Cover 25, 1200mm length CCN 25	▶ 1.5mm x 25 x 25 x 1200mm Surface Mount Conduit Cover	1
Conduit Cover 35, 1200mm length CCN 35	▶ 1.5mm x 35 x 35 x 1200mm Surface Mount Conduit Cover	1
Conduit Cover 45, 1200mm length CCN 45	▶ 1.5mm x 45 x 45 x 1200mm Surface Mount Conduit Cover	1
Conduit Cover 55, 1200mm length CCN 55	▶ 1.5mm x 55 x 55 x 1200mm Surface Mount Conduit Cover	1
Conduit Cover 55, 2400mm length CCN 55-24	▶ 1.5mm x 55 x 25 x 2400mm Surface Mount Conduit Cover	1
Conduit Cover 75, 1200mm length CCN 75	▶ 1.5mm x 75 x 75 x 1200mm Surface Mount Conduit Cover	1
Conduit Cover 100, 1200mm length CCN 100	▶ 1.5mm x 100 x 100 x 1200mm Surface Mount Conduit Cover	1
Conduit Cover 25, 1400mm length CCN 25-14	▶ 1.5mm x 25 x 25 x 1400mm Surface Mount Conduit Cover	1
Conduit Cover 35, 1400mm length CCN 35-14	▶ 1.5mm x 35 x 35 x 1400mm Surface Mount Conduit Cover	1
Conduit Cover 45, 1400mm length CCN 45-14	▶ 1.5mm x 45 x 45 x 1400mm Surface Mount Conduit Cover	1
Conduit Cover 55, 1400mm length CCN 55-14	▶ 1.5mm x 55 x 55 x 1400mm Surface Mount Conduit Cover	1
Conduit Cover 75, 1400mm length CCN 75-14	▶ 1.5mm x 75 x 75 x 1400mm Surface Mount Conduit Cover	1
Conduit Cover 100, 1400mm length CCN 100-14	▶ 1.5mm x 100 x 100 x 1400mm Surface Mount Conduit Cover	1



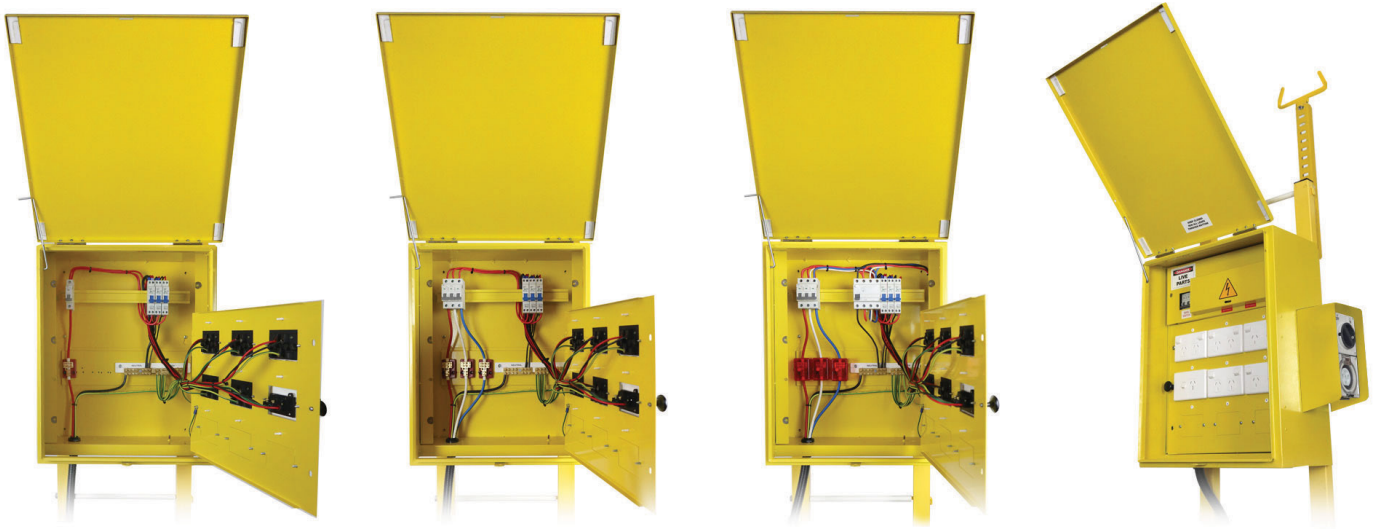
Description	Quantity
► T Bracket To Suit MEVIC121L & DRAV	16



Description	Quantity
► 130 x 150 x 75mm Earth Connection Box	1



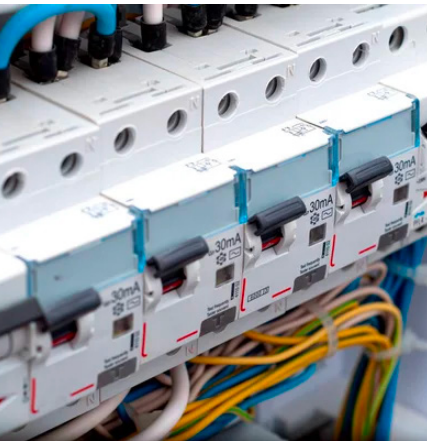
Products	Description	Quantity
Standard Pole 40/40	► Gal Pipe 40nb (Outer Diameter 48.3mm, thickness 2.3mm) WSX3 Compliant	5
Standard Pole 40/50	► Gal Pipe 50nb (Outer Diameter 60.3mm, thickness 2.3mm) WSX3 Compliant	5



Code	Description	Width	Height	Depth
TPB-44 BOX ONLY	▶ Temporay Power Board - Box Only	445	550	230
TPB-44 STAND	▶ Temporay Power Board - 2 Piece Stand Only	445	1800	700

Code	Description
TPB-PW32A 1P	▶ Temporary Power Board including stand - Prewired 32A 1P with 3 X 10A Twin Double Pole & 1 X 15A Double Pole Power Points. Has capacity for up to 9 twin 1P Power Points. IP23
TPB-PW63A 1P	▶ Temporary Power Board including stand - Prewired 63A 1P with 5 X 10A Twin Double Pole & 1 X 15A Double Pole Power Points. Including active link for incoming 25mm and 3 out going cables up to 16mm. Has capacity for up to 9 twin 1P Power Points. IP23
TPB-PW63A 3P	▶ Temporary Power Board including stand - Prewired 63A 3P for even distributed single phase across 3 phases with 5 X 10A Twin Double Pole & 1 X 15A Double Pole Power Points. Including 3 active links for incoming 25mm and 3 out going cables up to 16mm. Has capacity for up to 9 twin 1P Power Points. IP23
TPB-PW63A 3P OUTLET	▶ Temporary Power Board including stand - Prewired 63A 3P for even distributed single phase across 3 phases with 5 X 10A Twin Double Pole & 1 X 15A Double Pole Power Points. One 5 pin external IP56 3P Outlet. Including 3 active links for incoming 25mm and 3 out going cables up to 16mm. Has capacity for up to 9 twin 1P Power Points. IP23

Accessories	Description
TPB-44 STAND	▶ Temporary Power Board Two Piece Stand Only 1800mm height with insulated cable tie rods top and bottom. Suited for 445 wide X 550 high X 230 Deep Temporary Power Board.
TPB-CABLE HOOK	▶ Over head Insulated Cable Hook to support incoming and outgoing cables to an additional height of up to 2100mm.
TPB-TRAY	▶ 3P Fold Away Service Tray for safe charging of batteried power tools
TPB-3P PROTECTION	▶ External power point guard to provide mechanical protection for the outlet.



ABOUT K2COMPONENTS

K2 Components has supported the Australian electrical and building industry for more than 20 years, operating out of our Adelaide base at Regency Park for over 40 years. The extensive history as an original equipment manufacturer within the automotive, mining, building and seating industries allows K2 Components to continue providing high-quality core products to its valued customers and distribution networks Australia wide.



AUSTRALIAN'S ELECTRICAL WHOLESALE SUPPLIER

Products distributed via all major electrical wholesalers.



MANUFACTURING

Our facility at Regency Park South Australia supplies quality products for number of industries.



AUSTRALIAN OWNED

K2 Components is an Australian owned company since 1984.



QUALITY & SERVICE

Our focus is on quality and service for you and your customers.

