

MAU60

Australian Made
Galvanised Meter Enclosure



IP23

Enclosure
Range



Cable
Management



Panel
Support
Ramp



4X Ingress
Protection
Rear of Panel

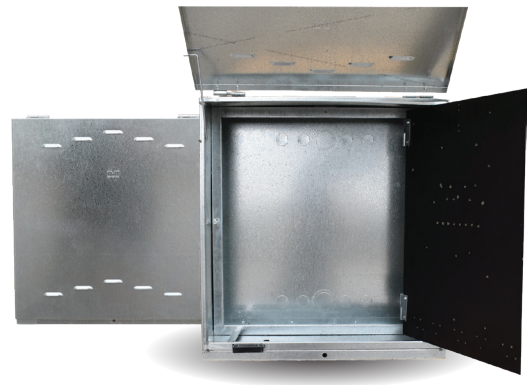
KEY FEATURES

- ▶ NSW Power Networks Accepted
- ▶ Designed to meet AS3000 Standard
- ▶ Available with 12 or 18 pole surface mount Din Rail enclosure



Technical Specifications

Code	MAU60
Occupancy	▶ Single Two Meter
Width (mm)	600
Height (mm)	600
Depth (mm)	250
Panel size (mm)	570 x 560 x 6



Available Accessories

Code	Occupancy	Width (mm)	Height (mm)	Depth (mm)
PME12	▶ 12 Pole Surface Mount Din Rail Enclosure	160	260	60
PME18	▶ 18 Pole Surface Mount Din Rail Enclosure	160	365	60

MAU60 Features & Benefits

- ▶ Made to Energy NSW Specifications
- ▶ Suitable for Single Phase & Three Phase Applications
- ▶ IP23 Rated Meter Enclosure
- ▶ Cable Management Tie off Point and Lead Entry Protection AS/NZS 3000:2018
- ▶ 570 X 560 X 6mm Pre-drilled Double Hinged Meter Panel
- ▶ Door Open Strap for Easy Installation and Maintenance
- ▶ Safe 4X Ingress Protection Flanges Rear of Panel
- ▶ Panel Support Ramp for Installation Ease and Panel Sag Prevention
- ▶ 75mm Behind Meter Panel
- ▶ Knockouts Rear and Base for Convenient Cable Access
- ▶ Available with 12 or 18 Pole Surface Mount Din Rail Enclosure
- ▶ Made with Australian-Made Galvanized G2 Z275 AS/NZS 1397:2021
- ▶ Long-lasting Custom Made Australian Hinges
- ▶ Australian Moulded Plastic Safety Components

PROUDLY AUSTRALIAN MADE