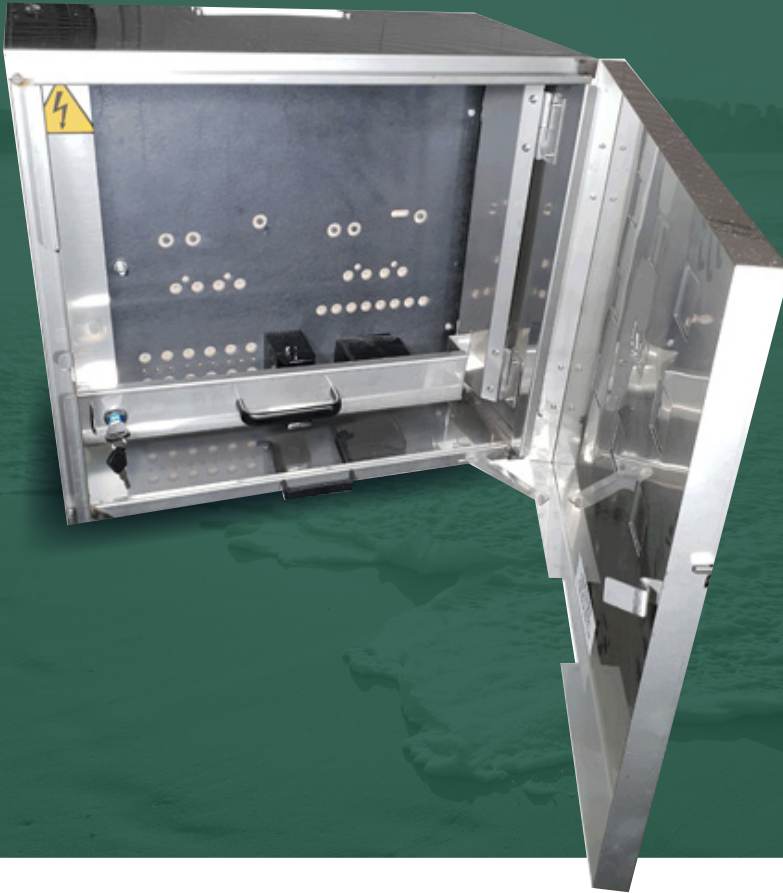


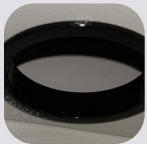
MEV1 SS

Stainless Steel Multi Phase Meter
Only Enclosures



IP23

Enclosure Range



KEY FEATURES

- ▶ Victorian Electricity Supply Industry (VESI) Accepted
- ▶ IP23 Protection Rating
- ▶ Victorian Power Approved Internal Lock & Key (CL001)
- ▶ 100 AMP Service Fuse Holder & Heavy Duty Neutral Link Fitted
- ▶ Stainless Steel Construction Grade 316



Technical Specifications

Specifications	Width	Height	Depth
Size	470	420	270
Meter Panel	400	380	6

Product	Order Code	Meter Isolator
Meter Only (75mm)	MEV1 SS	Meter Only Enclosure 75mm Behind Panel (Stainless Steel)

Available Accessories

Accessory/Spare Parts	Order Code	Description
Spare Part - MEV1 Standard Panel	MPV1-D	MEV1 Hinged Meter Panel Drilled for Victorian standard
Spare Part - MEV1 Blank Panel	MPV1-B	MEV1 Hinged Meter Panel Blank for Custom Projects

Features & Benefits

- ▶ Victorian Power Approved Internal Lock & Key (CL001)
- ▶ 100A Service Fuse Holder & Heavy Duty Neutral Link Fitted
- ▶ 316 Stainless Steel Natural Finish
- ▶ Provision on meter panel for two meters.
- ▶ Approved lock and key to protect service fuse.
- ▶ Top Cable entry gland with 140mm x 25mm access.
- ▶ 100 AMP Service Fuse Holder & Heavy Duty Neutral Link Fitted
- ▶ Stainless Steel Construction Grade 316
- ▶ Louvered door to provide ventilation.
- ▶ Quality galvanised steel construction
- ▶ Powder coated for additional corrosion protection (RAL7035)
- ▶ Removable door with retainer bar to keep door open.
- ▶ Spare parts kit supplied.
- ▶ Rain Hood available extra